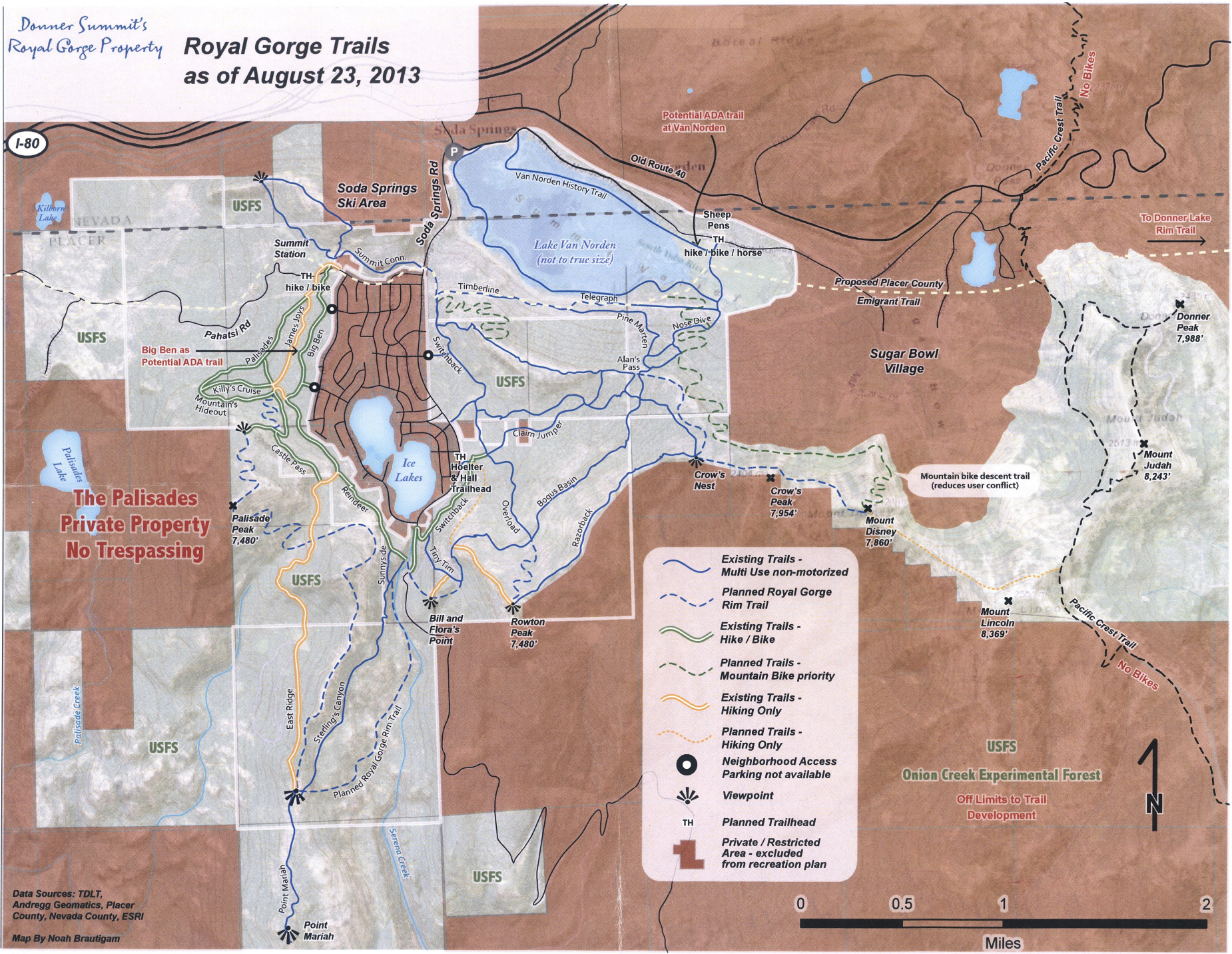


Donner Summit's  
Royal Gorge Property

# Royal Gorge Trails as of August 23, 2013

I-80



Big Ben as  
Potential ADA trail

**The Palisades  
Private Property  
No Trespassing**

- Existing Trails - Multi Use non-motorized
- Planned Royal Gorge Rim Trail
- Existing Trails - Hike / Bike
- Planned Trails - Mountain Bike priority
- Existing Trails - Hiking Only
- Planned Trails - Hiking Only
- Neighborhood Access Parking not available
- Viewpoint
- Planned Trailhead
- Private / Restricted Area - excluded from recreation plan

USFS  
**Onion Creek Experimental Forest**  
Off Limits to Trail Development



Data Sources: TDLT,  
Andregg Geomatics, Placer  
County, Nevada County, ESRI  
Map By Noah Brautigam